

Lower Thames Crossing

9.179 Computer Generated Views from Thong Lane green bridge south

Infrastructure Planning (Examination
Procedure) Rules 2010

Volume 9

DATE: November 2023
DEADLINE: 7

Planning Inspectorate Scheme Ref: TR010032
Examination Document Ref: TR010032/EXAM/9.179

VERSION: 1.0

Lower Thames Crossing

9.179 Computer Generated Views from Thong Lane green bridge south

List of contents

	Page number
1 Introduction	1
2 Schedule of Plans included in this application document	3

1 Introduction

- 1.1.1 This document is submitted to the Planning Inspectorate on behalf of the Secretary of State in relation to an application made by National Highways (the Applicant) under section 37 of the Planning Act 2008.
- 1.1.2 The application is for the grant of development consent for the A122 Lower Thames Crossing. Should development consent be granted, the draft A122 (Lower Thames Crossing) Development Consent Order (Application Document 3.1) (the draft Order) will be made by the Secretary of State (subject to any modifications considered appropriate).
- 1.1.3 Further illustrative material showing views of the M2/A2/A122 Lower Thames Crossing junction from Thong Lane green bridge south was requested by the Examining Authority (ExA) in its second written questions (ExQ2 Q12.3.1). The Applicant has explained the reasons for providing computer generated views, rather than photomontages, in its response to ExQ2 Q12.3.1 [[REP6-115](#)].
- 1.1.4 Three computer generated views have been provided, as described in Table 1.1 below. A location plan insert has been provided on each drawing sheet to show where the viewpoint is located.

Table 1.1 Computer generated views from Thong Lane green bridge south

Document Title	Description
Computer Generated View from Thong Lane green bridge south (Winter View Year 1)	Illustrative view west from Thong Lane green bridge south towards the M2/A2/A122 Lower Thames Crossing junction in winter at the year of opening. View includes proposed planting along the western edge of the bridge.
Computer Generated View from Thong Lane green bridge south with no foreground planting (Summer View Year 15)	Illustrative view west from Thong Lane green bridge south towards the M2/A2/A122 Lower Thames Crossing junction in summer at design year (fifteen years after opening). View does not include proposed planting along the western edge of the bridge in order to provide visibility of the junction.
Computer Generated View from Thong Lane green bridge south with foreground planting (Summer View Year 15)	Illustrative view west from Thong Lane green bridge south towards the M2/A2/A122 Lower Thames Crossing junction in summer at design year (fifteen years after opening). View includes proposed planting along the western edge of the bridge in order to illustrate the Project design.

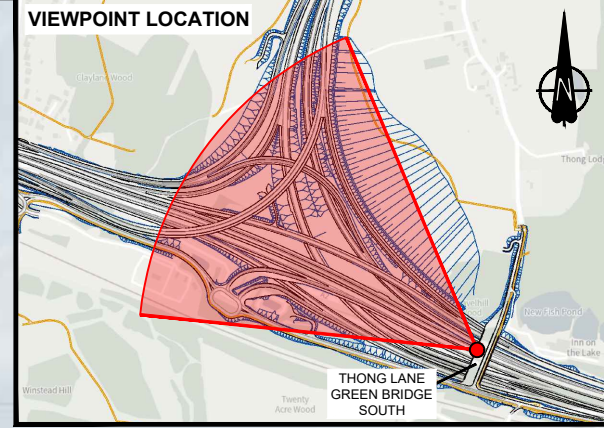
- 1.1.5 The computer generated views were created as follows:
- A virtual camera was created and positioned on the Thong Lane green bridge looking west towards the M2/A2/A122 Lower Thames Crossing junction.
 - The existing landscape beyond the Project extents has been simulated by draping aerial photography over a digital terrain model to provide wider

context. This depicts existing terrain only and does not reflect any natural or built features such as woodland blocks and residential properties in 3D.

- c. The Project design has been illustrated using composited 3D engineering design elements, with appropriate material finishes assigned to elements such as structures.
- d. The background sky and lighting levels have been simulated in the image.
- e. Images have been rendered in Autodesk 3ds Max and finished in Adobe Photoshop.

2 Schedule of Plans included in this application document

Document Title	Document Number	Revision
Computer Generated View from Thong Lane green bridge south (Winter View Year 1)	HE540039-CJV-ELS-SZP_ZZ000000_Z-DR-LV-00335	P01
Computer Generated View from Thong Lane green bridge south with no foreground planting (Summer View Year 15)	HE540039-CJV-ELS-SZP_ZZ000000_Z-DR-LV-00336	P01
Computer Generated View from Thong Lane green bridge south with foreground planting (Summer View Year 15)	HE540039-CJV-ELS-SZP_ZZ000000_Z-DR-LV-00337	P01



NOTES

Existing terrain modelling and aerial photography have been used to create the background imagery. Existing features such as buildings have not been modelled in 3D.

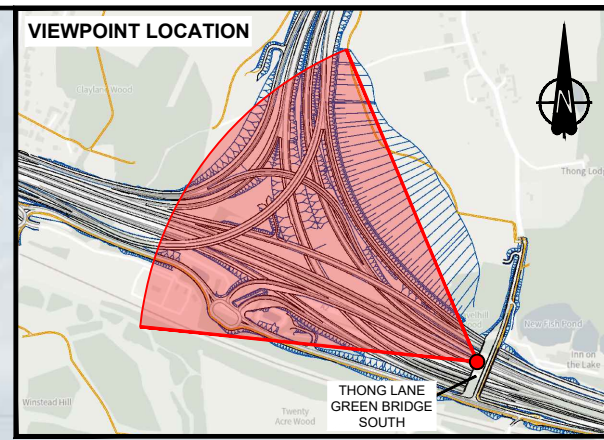


LOWER THAMES CROSSING
 5th Floor Beaufort House
 15 St Botolph Street
 London EC3A 7DT

Project LOWER THAMES CROSSING
 Drawing title Computer Generated View from Thong Lane green bridge south
 Winter View Year 1

Drawn	BB	Date - 03/11/2023	Status	Revision
Checked	SK	Date - 03/11/2023	DCO EXAMINATION	P01
Approved	BF	Date - 03/11/2023		
Drawing number			HE540039-CJV-ELS-SZP_ZZ000000_Z-DR-LV-00335	

P01	S8	03/11/2023	Deadline 7	BB	SK	BF
Rev	Status	Rev. Date	Purpose of revision	Drawn	Chck'd	Apprv'd



NOTES

Existing terrain modelling and aerial photography have been used to create the background imagery. Existing features such as buildings have not been modelled in 3D.

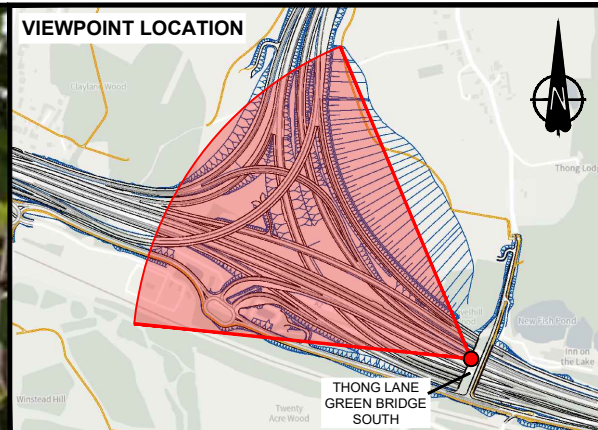


LOWER THAMES CROSSING
 5th Floor Beaufort House
 15 St Botolph Street
 London EC3A 7DT

Project LOWER THAMES CROSSING
 Drawing title Computer Generated View from Thong Lane green bridge south with no foreground planting Summer View Year 15

Drawn	BB	Date - 03/11/2023	Status	Revision
Checked	SK	Date - 03/11/2023	DCO EXAMINATION	P01
Approved	BF	Date - 03/11/2023		
Drawing number HE540039-CJV-ELS-SZP_ZZ000000_Z-DR-LV-00336				

P01	S8	03/11/2023	Deadline 7	BB	SK	BF
Rev	Status	Rev. Date	Purpose of revision	Drawn	Chck'd	Apprv'd



NOTES

Existing terrain modelling and aerial photography have been used to create the background imagery. Existing features such as buildings have not been modelled in 3D.

Client



LOWER THAMES CROSSING

5th Floor Beaufort House
15 St Botolph Street
London EC3A 7DT

Project

LOWER THAMES CROSSING

Drawing title

Computer Generated View from Thong Lane green bridge south
with foreground planting
Summer View Year 15

Drawn

BB

Date - 03/11/2023

Status

DCO EXAMINATION

Revision

P01

Checked

SK

Date - 03/11/2023

Approved

BF

Date - 03/11/2023

Drawing number

HE540039-CJV-ELS-SZP_ZZ000000_Z-DR-LV-00337

P01	S8	03/11/2023	Deadline 7	BB	SK	BF
Rev	Status	Rev. Date	Purpose of revision	Drawn	Chck'd	Apprv'd

If you need help accessing this or any other National Highways information, please call **0300 123 5000** and we will help you.

© Crown copyright 2023.

You may re-use this information (not including logos) free of charge in any format or medium, under the terms of the Open Government Licence. To view this licence:

visit www.nationalarchives.gov.uk/doc/open-government-licence/

write to the **Information Policy Team, The National Archives, Kew, London TW9 4DU**, or email psi@nationalarchives.gsi.gov.uk.

Mapping (where present): © Crown copyright and database rights 2023 OS 100030649. You are permitted to use this data solely to enable you to respond to, or interact with, the organisation that provided you with the data. You are not permitted to copy, sub-licence, distribute or sell any of this data to third parties in any form.

If you have any enquiries about this publication email info@nationalhighways.co.uk or call **0300 123 5000***.

*Calls to 03 numbers cost no more than a national rate call to an 01 or 02 number and must count towards any inclusive minutes in the same way as 01 and 02 calls.

These rules apply to calls from any type of line including mobile, BT, other fixed line or payphone. Calls may be recorded or monitored.

Printed on paper from well-managed forests and other controlled sources when issued directly by National Highways.

Registered office Bridge House, 1 Walnut Tree Close, Guildford GU1 4LZ

National Highways Limited registered in England and Wales number 09346363